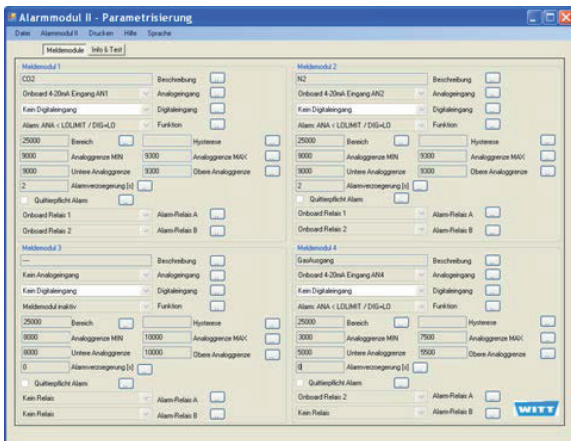


Parameterisable Monitoring systems



Inlet pressure monitoring with alarm module AM3

Separate inlet pressure monitoring, also integrated available. A gas inlet pressure controlling for a variety of industrial applications.

A permanent inlet pressure monitoring to guarantee quality and productivity of production processes.

One of the advanced solutions for monitoring gas inlet pressures in gas mixing systems. The unit controls the gas pressures at the inlets of the gas mixer and in the receiver, ensures a constant quality process.

Benefits

- simultaneous monitoring up to 3 gas inlets
- intuitive operation by membrane key pad in combination with LCD-Display and green LED's
- different user levels
- permanent display of measured pressures
- high process reliability
- error messages or exceeds of threshold limits triggers an alarm and switches a potential free contact (e.g. to shut down machinery to avoid quality problems)
- data transfer via USB port
- continuous monitoring of freely adjustable limit values

Options

- for flammable gases available as Ex-version in separate control cabinet
- data cable
- ALARM CONTROL-Software licence code for comprehensive administration
- integrated measured data logging
- integrated digital printer

**Other models, options and accessories available on request.
Please identify the individual gases at the time of enquiring!**

Technical data overleaf



Parameterisable Monitoring systems

Technical Data	
Type	separate or in gas mixer integrated inlet pressure monitoring with alarm module NXT+
Gases	all technical gases (excluding toxic or corrosive gases, also no mixtures of fuel gases with gases including O ₂ for example air ...)
Temperature	-10 °C – +50 °C / +14 °F – +122 °F (operation) -20 °C – +60 °C / -4 °F – +140 °F (storage)
Explosion protection ATEX (option)	zone 1, II 2G IIB+H2 T3
Gas connections for fuel gases	G 1/4 RH with cone, WITTFIX 6 mm G 3/8 LH with cone, WITTFIX 6 mm other connections available on request
Adjustable alarm range	min. 0 up to max. 40 barg
Interfaces	USB port
Analogue input	4-20 mA
Load of potential-free contact	250 V 2 A or 24 V 2 A
Housing	wall housing (IP65)
Weight	approx. 5,0 kg
Dimensions (HxWxD)	approx. 302 x 280 x 158 mm (11.89 x 11.02 x 6.22 inch) (without connections)
Voltage	230 V AC, 110 V AC or 24 V DC
Approvals	Company certified according to ISO 9001 CE-marked according to: - EMC 2014/30/EU - Low Voltage Directive 2014/35/EU - ATEX 95 Directive 2014/34/EU